

Alpha400/200 Driver Installation ver.4.0

Your Alpha amplifier should NOT be connected to the USB at this time. Do not connect the amplifier until instructed at the appropriate point in the installation process.

If you already have an older version of the Alpha amplifier driver and software installed, you must first uninstall that older version before proceeding. If you do not have an older version installed, you can skip over the next session and proceed directly to the Installation section.

Uninstalling old version

The first step will be to uninstall the old version of the Alpha amp utility test software. From the Start Menu you can locate either the “Alpha400 Demo” or “Alpha200 Demo” menu item, then access the uninstall feature from there. Or, alternatively, you can use Windows Explorer and go to either the c:\Program Files\Alpha400 or \Alpha200 folder and manually locate the uninstall program and run it from there.

Note that the uninstall program will not actually remove the driver files from the Windows folder. After running the uninstall program you must manually delete the old driver files to prevent Windows from continuing to attempt to use them when your amplifier is connected. Use Windows Explorer and navigate to the **c:\Windows\System32\Drivers** folder. Locate both the A200FW.sys and A200USB.sys (for an Alpha200 amplifier), or the A400FW.sys and A400USB.sys (for an Alpha400 amplifier), and then delete those files.

Installing new version

If you have not already done so, from the TDS website download and save the appropriate installation program for the version of Windows that you will be installing on. You can save this file to any location on your computer.

Run the installation program either by double-clicking, or by right-click and select “Run”. You will be greeted by an opening screen followed by a series of dialog prompts. At each new prompt click “Next” to continue with the install process. There will then be a series of “Attention” messages, at each one click “OK” to continue.

If you get the a message from the Microsoft VisualC++ Redistributable Setup that it is in “Maintenance Mode”, then select the option to “Repair” and click Next.

When the installation process has finished you will be prompted to reboot your computer.

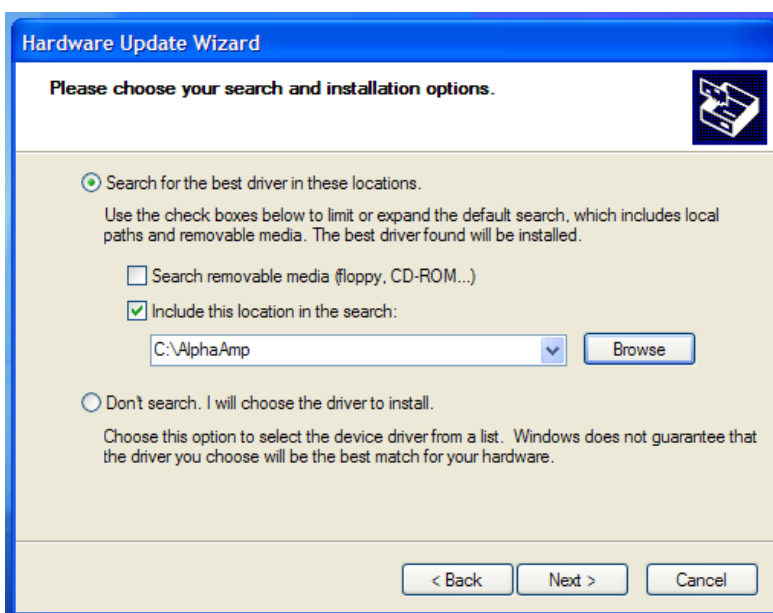
Note for Windows7 Users: It is very likely that the Windows7 permissions will block the installation program from copying the SYS file to the \windows\system32\drivers folder. After the installation process has finished you may need to manually copy this file. To copy this file, use Windows Explorer and navigate to the c:\AlphaAmp folder. Locate the AlphaAmp_W7_64.SYS folder and click on it to highlight it. With the file highlighted, right-click

and select Copy. Then navigate to the Windows folder and click the '+' to see all of the sub-folders. Locate the \System32 folder and again click the '+'. Now locate and click on the \Drivers folder so that it is highlighted. With the \Drivers folder highlighted right-click and select "Paste". The c:\AlphaAmp\AlphaAmp_W7_64.SYS file will be copied to the c:\Windows\System32\Drivers folder.

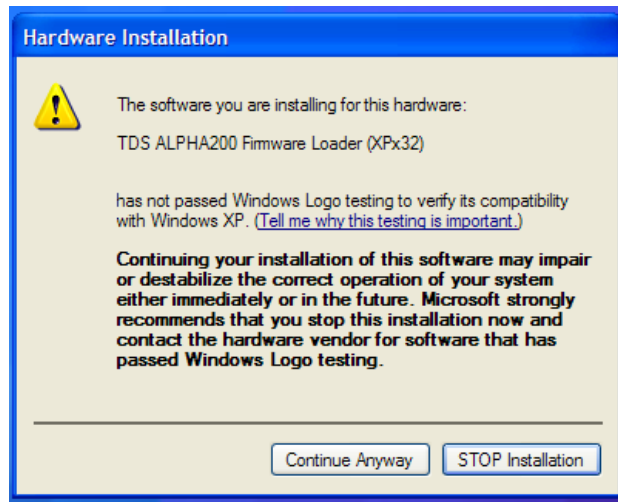
Once all of the old driver files have been removed and the installation process has completed, then you can connect your Alpha amplifier to the USB. You will then see the Windows "Found New Hardware Wizard" start up, and it will present a dialog as shown below:



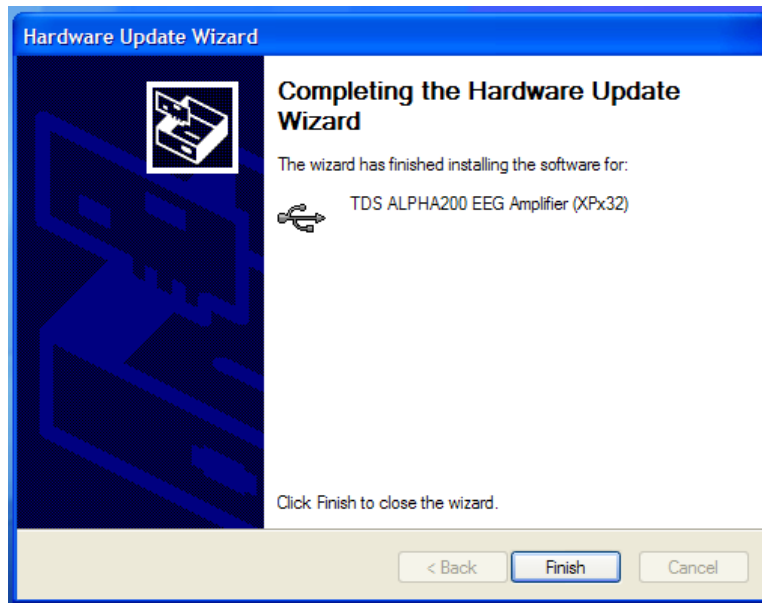
Select the "Install from a list or specific location (Advanced)" option, and click Next. At the next dialog put a check in the "Include this location in the search:" box, and then click the Browse button and navigate to the c:\AlphaAmp folder, the dialog will look like this:



Click Next and Windows will locate the new driver. You will see a warning message that will display the device name as “TDS Alpha200 Firmware Loader (XPx32)”:



A this message click “Continue Anyway” and the updated driver will be installed. You will then see this message:



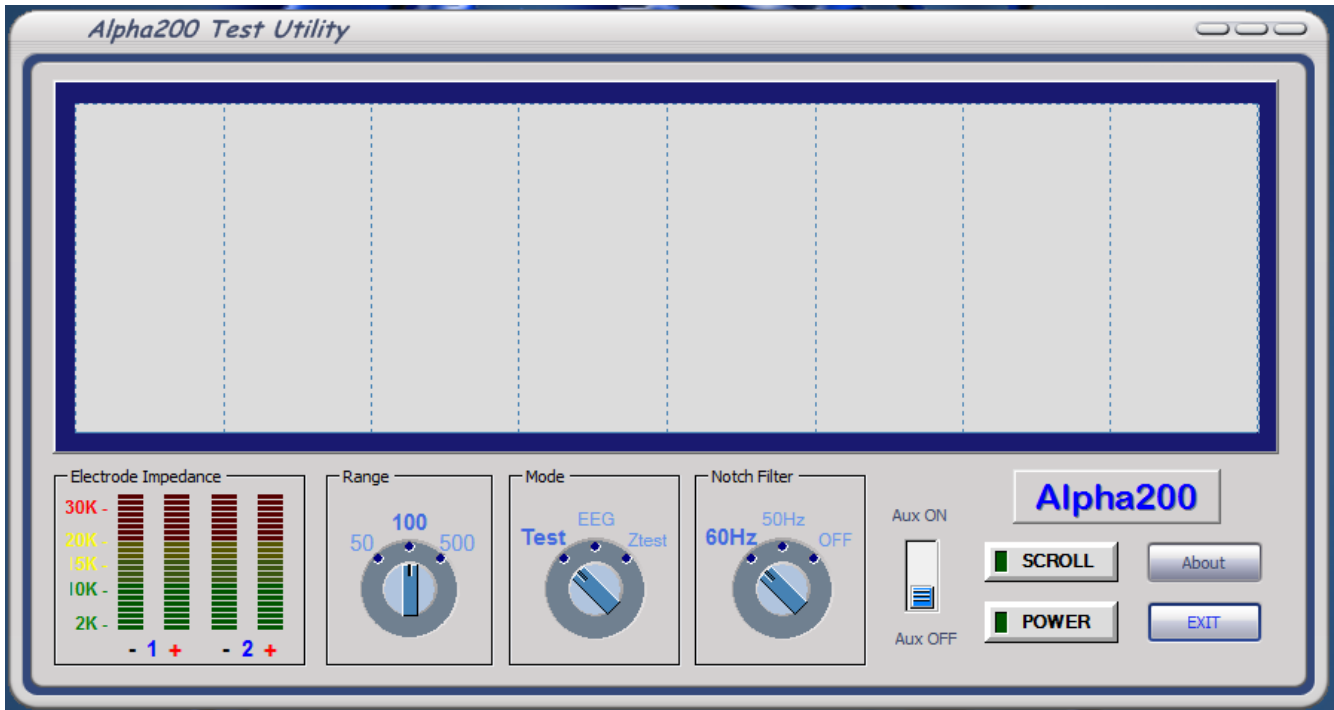
The driver installation process will actually happen twice. In most cases Windows will automatically use the previous parameters and complete the installation so quickly that you will not notice it. But, on some systems, Windows may again step you manually through the above sequence of dialogs a second time. Just repeat the same process as shown above.

Once the process is finished, the new drivers are installed on your computer and you are now ready to test your amplifier.

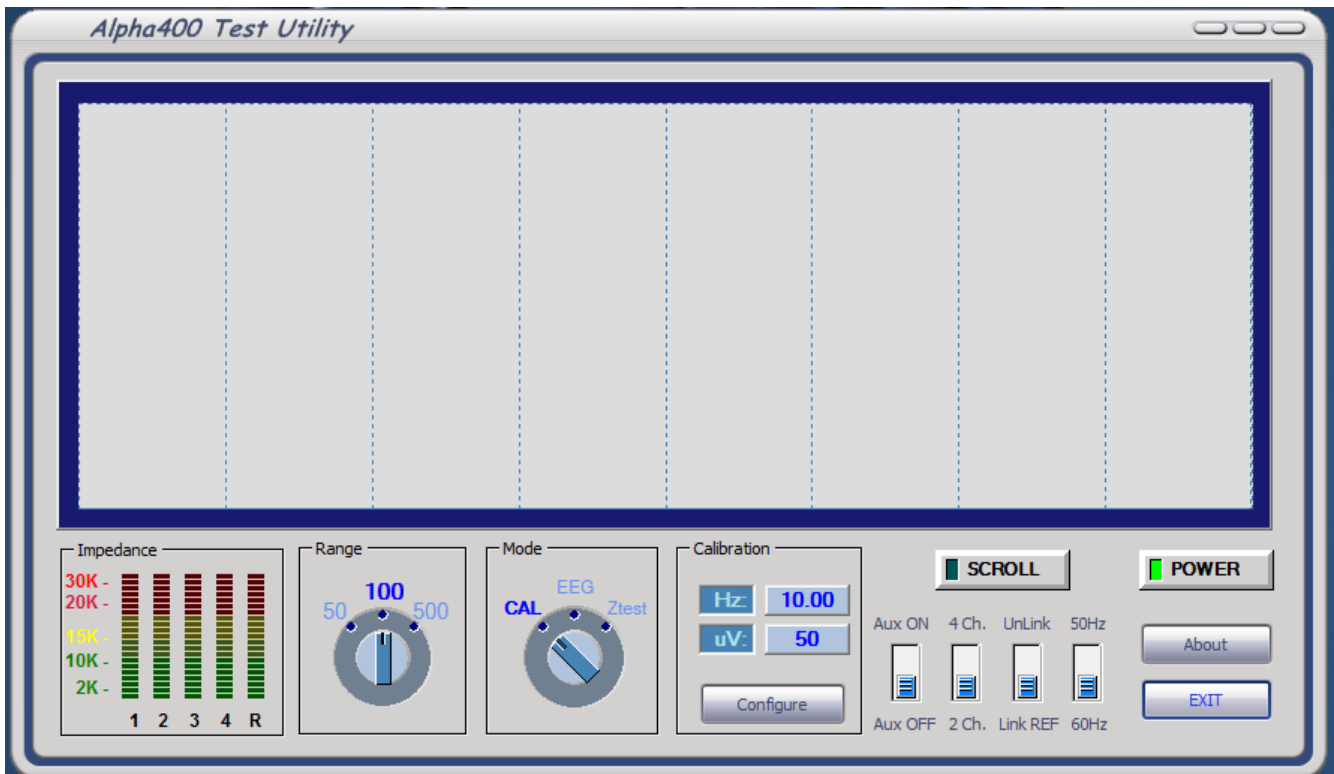
The AlphaAmp installation program will have created a pair of shortcut icons on your desktop.

Double-click on the icon that is appropriate for the model of amplifier that you are using, either Alpha200 or Alpha400.

The AlphaAmp test utility program will then start up, which for the Alpha200 is shown below:

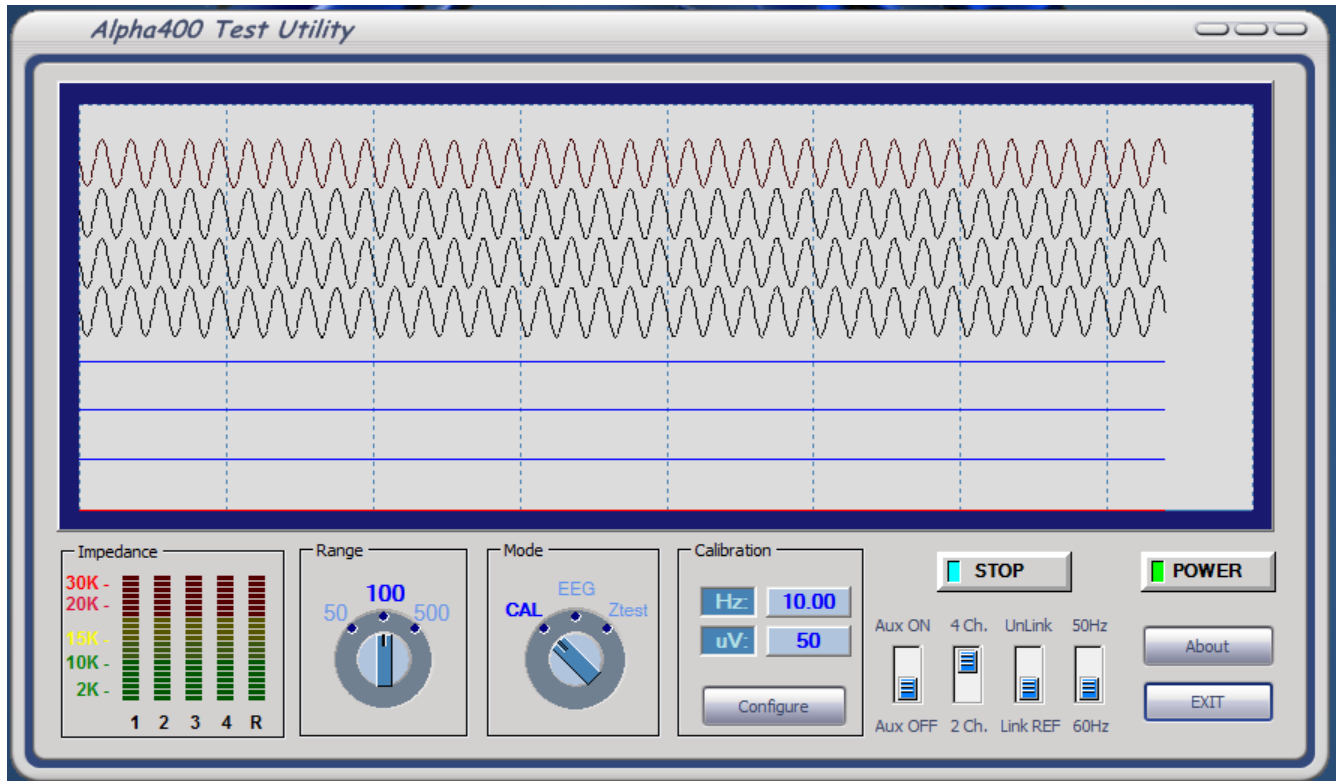


And for the Alpha400 the screen will look like this:



If the POWER switch is not lit up, then click on the POWER switch to turn the amplifier power on. You will notice that when you click on the switch it will light up, and also the Power LED on the actual amplifier will also light up.

Next click the SCROLL button and you will begin to observe a calibration sine wave scrolling across the screen as shown below:



Congratulations! Your Alpha Amplifier is now installed and ready for use. You will find a User's Manual located in the c:\AlphaAmp folder.

If you have any problems with the installation process, or have any questions regarding the use of your amplifier, please contact customer support at TeleDiagnostic Systems (408-845-9000).